

Henley-on-Thames: Then and Now

As with any other town, Henley-on-Thames is constantly evolving. Several sites in the town and on the river have been the subject of picture postcards over the years. Here we examine some of these sites as they were in the past and as they are now.

Marsh Lock



Marsh Lock in 1964



Marsh Lock in 2008

Mill Meadows and The Promenade



The River Thames at Henley in 1906



The River Thames at Henley in 2008

The Foot of White Hill



The Foot of White Hill in the 1900s



The Foot of White Hill in 2009

The Fair Mile



The Fair Mile in 1907



The Fair Mile in 2009

Northfield End



Northfield End junction with Marlow Road in 1967



Northfield End junction with Marlow Road in 2010

The Market Place



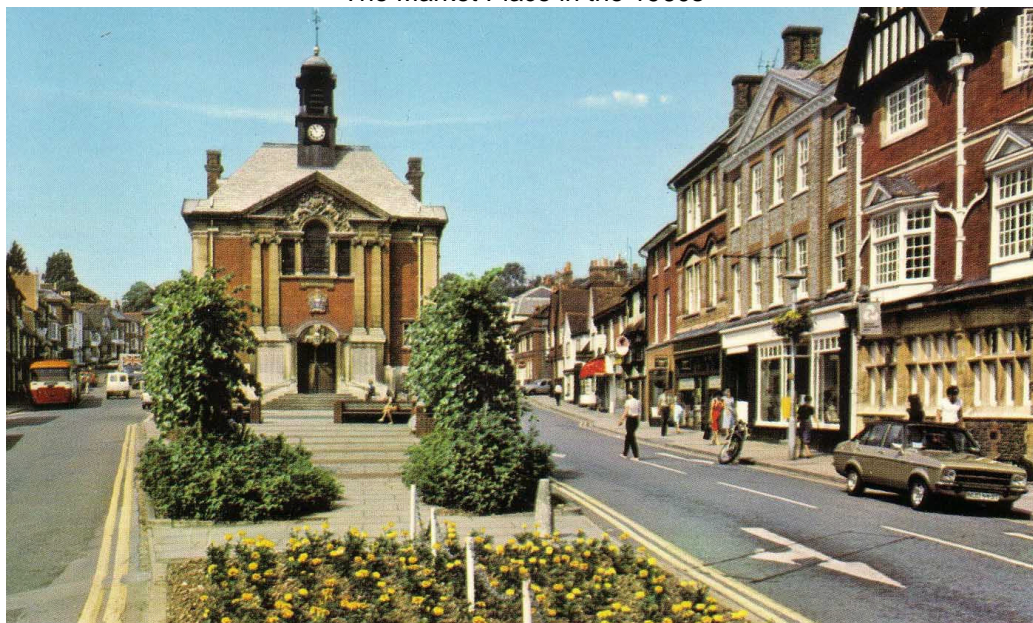
The Market Place in 1904



The Market Place in 1905



The Market Place in the 1960s



The Market Place and Falaise Square in the 1980s



The Market Place in 2009

Hart Street



Hart Street in the 1890s



HART STREET, HENLEY.

July 9. 06

H. J. CROCKER, 34, BELL STREET, HENLEY-ON-THAMES

Hart Street in 1906



Hart Street in 1916



Hart Street in 1926



Hart Street in the 1960s



Hart Street in 2009

The Town Centre



The Market Place looking towards Hart Street in the 1900s



The Market Place looking towards Hart Street in the 1980s



The Market Place looking towards Hart Street in 2009